



# Involucrin Polyclonal Antibody

<b>Catalog No</b>	YP-Ab-03141
<b>Isotype</b>	IgG
<b>Reactivity</b>	Human;Rat;Mouse;
<b>Applications</b>	WB;IHC;IF;ELISA
<b>Gene Name</b>	IVL
<b>Protein Name</b>	Involucrin
<b>Immunogen</b>	The antiserum was produced against synthesized peptide derived from human Involucrin. AA range:536-585
<b>Specificity</b>	Involucrin Polyclonal Antibody detects endogenous levels of Involucrin protein.
<b>Formulation</b>	Liquid in PBS containing 50% glycerol, 0.5% BSA and 0.02% sodium azide.
<b>Source</b>	Polyclonal, Rabbit,IgG
<b>Purification</b>	The antibody was affinity-purified from rabbit antiserum by affinity-chromatography using epitope-specific immunogen.
<b>Dilution</b>	WB: 1/500 - 1/2000. IHC: 1/100 - 1/300. ELISA: 1/20000.. IF 1:50-200
<b>Concentration</b>	1 mg/ml
<b>Purity</b>	≥90%
<b>Storage Stability</b>	-20°C/1 year
<b>Synonyms</b>	IVL; Involucrin
<b>Observed Band</b>	68kD
<b>Cell Pathway</b>	Cytoplasm. Constituent of the scaffolding of the cornified envelope.
<b>Tissue Specificity</b>	Keratinocytes of epidermis and other stratified squamous epithelia.
<b>Function</b>	function:Part of the insoluble cornified cell envelope (CE) of stratified squamous epithelia.,PTM:Substrate of transglutaminase. Some glutamines and lysines are cross-linked to other involucrin molecules, to other proteins such as keratin, desmoplakin, periplakin and envoplakin, and to lipids like omega-hydroxyceramide.,similarity:Belongs to the involucrin family.,subcellular location:Constituent of the scaffolding of the cornified envelope.,subunit:Directly or indirectly cross-linked to cornifelin (CNFN).,tissue specificity:Keratinocytes of epidermis and other stratified squamous epithelia.,
<b>Background</b>	involucrin(IVL) Homo sapiens Involucrin, a component of the keratinocyte crosslinked envelope, is found in the cytoplasm and crosslinked to membrane proteins by transglutaminase. This gene is mapped to 1q21, among calpactin I light chain, trichohyalin, profillaggrin, loricrin, and calcyclin. [provided by RefSeq, Jul 2008],



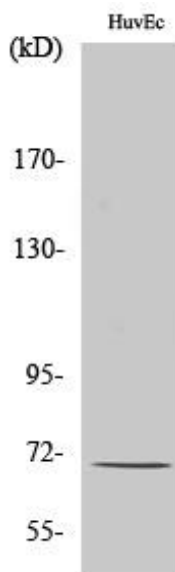
**matters needing attention**

Avoid repeated freezing and thawing!

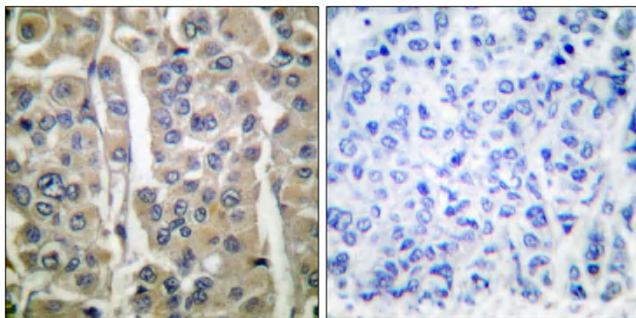
**Usage suggestions**

This product can be used in immunological reaction related experiments. For more information, please consult technical personnel.

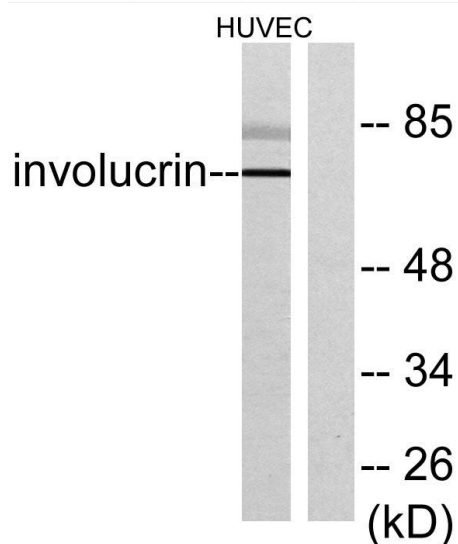
## Products Images



Western Blot analysis of various cells using Invulucrin Polyclonal Antibody



Immunohistochemistry analysis of paraffin-embedded human breast carcinoma tissue, using Invulucrin Antibody. The picture on the right is blocked with the synthesized peptide.



Western blot analysis of lysates from HUVEC cells, using Invulucrin Antibody. The lane on the right is blocked with the synthesized peptide.